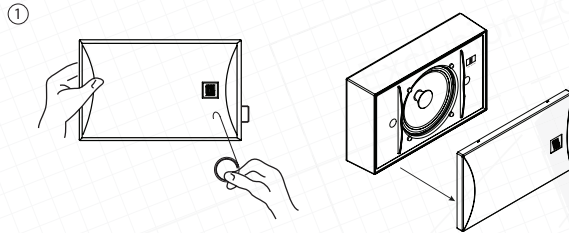
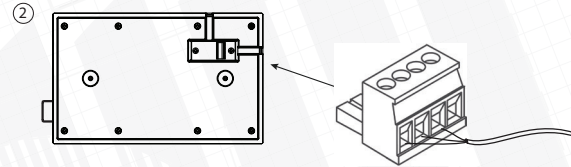


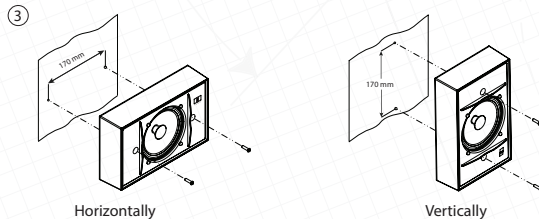
iSpeak 5R surface mount plastic wall loudspeaker



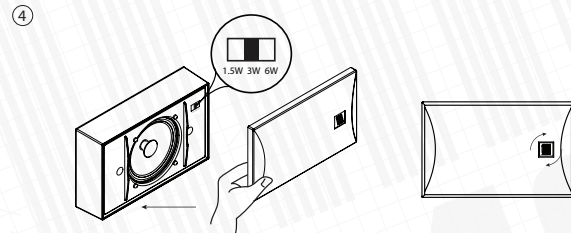
① Take a special tool from iSpeak 5R package and gently remove front grill.



② Connect audio cable to the Phoenix connector located on the rear panel. (Possible connection diagrams are available on other side of this page)



③ Fix the loudspeaker on the wall vertically or horizontally. (Distance between the mounting points - 170 mm)

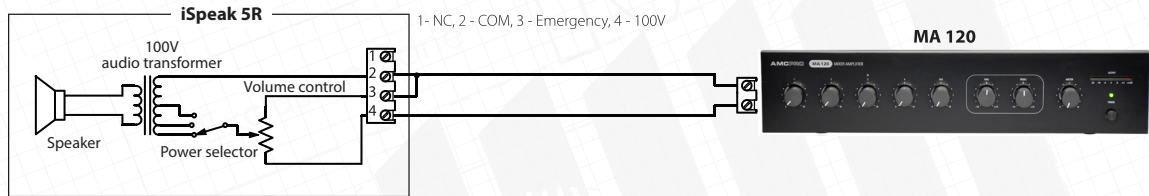


④ Set the desired loudspeaker power tap. Mount the grill on the loudspeaker and set correct AMC logo direction.

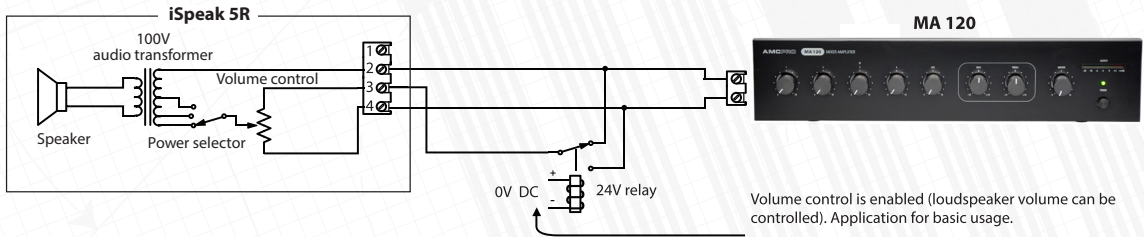
Please pay attention: Mount the loudspeaker on the reliable base only.

Connection diagrams

Connection diagram for two wires audio system.



Connection diagram for three wires audio system with emergency relay. (Volume control is enabled)



Connection diagram for three wires audio system with emergency relay. (Volume control is disabled)

